

Breathe

Inhale & Exhale

CARPET TILE SPECIFICATIONS

CONSTRUCTION
PILE FIBER
TUFTING GAUGE
PILE HEIGHT
TOTAL CARPET WEIGHT
BACKING STRUCTURE
PILE TREATMENT
STANDARD MODULE SIZE

EcoSquare®

Multi-Level Loop Texture
100% Solution Dyed Nylon
1/12 inch
3,0 - 5,5 mm,
4,115 gram/sq.m.
 **EcoSquare®**
Reinforced Recycled Hard Back
Stain and Soil Protection
Inhale 50x50 cm., Exhale 25x100 cm.

EcoSoft®

Multi-Level Loop Texture
100% Solution Dyed Nylon
1/12 inch
3,0 - 5,5 mm,
3,000 gram/sq.m.
 **EcoSoft®**
Recycled PET Cushion Back
Stain and Soil Protection
Inhale 50x50 cm., Exhale 25x100 cm.



PERFORMANCE

END USE CLASSIFICATION
CASTER CHAIR INDEX
DIMENSIONAL STABILITY
ELECTROSTATIC PROPENSITY
COLORFASTNESS TO LIGHT
INDOOR AIR QUALITY

BS EN 1307 Class 33 – Heavy Commercial
BS EN 985 ≥ 2.4
BS EN 986 < 0.15%
AATCC 134 < 3 KV
ISO 105 B02 Min L6
GLP 1022

BS EN 1307 Class 33 – Heavy Commercial
BS EN 985 ≥ 2.4
BS EN 986 < 0.15%
AATCC 134 < 3 KV
ISO 105 B02 Min L6
GLP 7543

FLAMMABILITY

HOT METAL NUT
RADIANT PANEL TEST
SMOKE DENSITY
SURFACE FLAMMABILITY


BS 4790 Low Radius
ASTM E648 Class 1
ASTM E662 < 450
ASTM D 2859 Passes

BS 4790 Low Radius
ISO 9239.1:2010 CRF 8.3 kW/m2
ASTM E662 < 450
ASTM D 2859 Passes

SOUND ABSORPTION

NOISE REDUCTION COEFFICIENT
IMPACT SOUND REDUCTION

BS EN ISO 354 NRC 0.15 or higher

BS EN ISO 354 NRC 0.30 or higher 
ΔLw 29dB

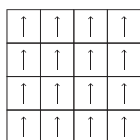
CERTIFICATION



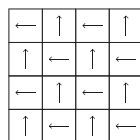
Specifications are subject to normal manufacturing tolerances, and subject to change without prior notice.
As in all quality carpets, colors are subject to dye lot variations.

INSTALLATION METHOD

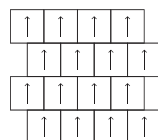
Inhale



Monolithic

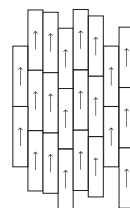


Checkerboard

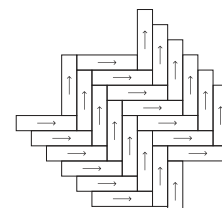


Horizontal Brick

Exhale



Random Vertical Brick



Herringbone

Headquarters

2054 New Petchburi Road
Bangkapi, Huaykwang, Bangkok 10310 Thailand
Tel +66 (0) 2314-5402, Fax +66 (0) 2318-3537
www.carpetsinter.com, info@carpetsinter.com

