

Installation Guide

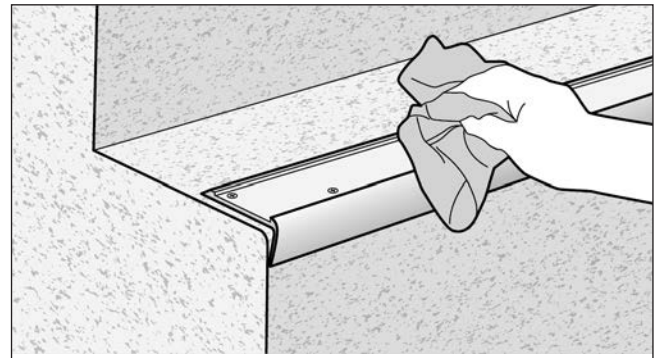
Date | 16.11.2018
Release No. | 1

Equipment required

- Tredsafe insert
- Roller

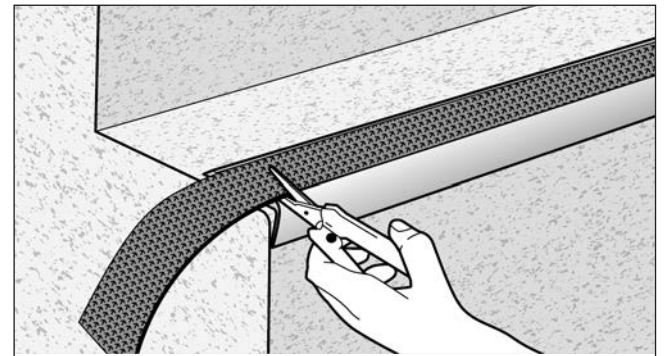
Step 1

- Ensure the aluminium channel is clean from dust, residues and debris. Wipe down with a cleaning solvent (Isopropyl Alcohol or similar).



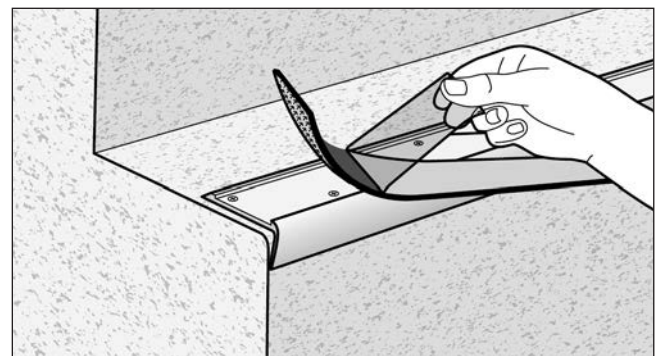
Step 2

- Precut the Insert to your required length.



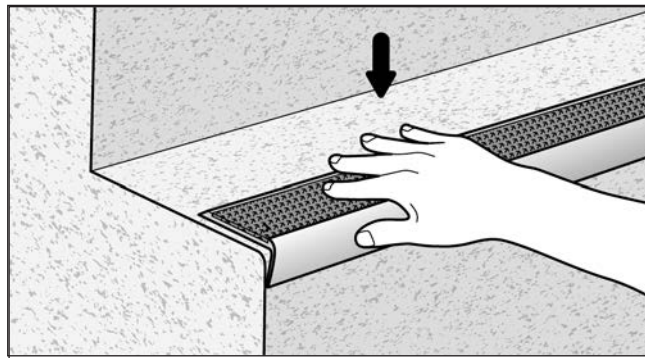
Step 3

- Remove the adhesive backing liner from the Tredsafe Insert.



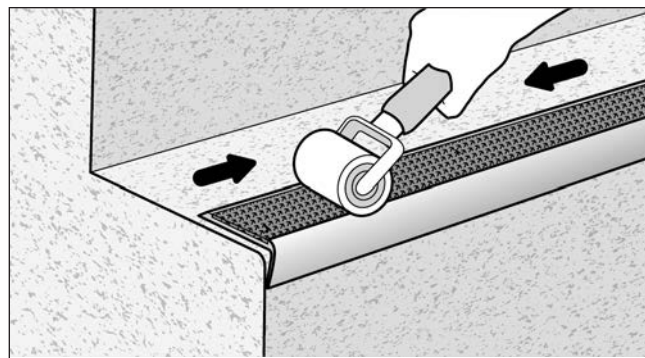
Step 4

- Install by placing the Insert into the nosing and pressing into place without undue stretching.



Step 5

- Once in place, roll over the Insert to ensure consistent adhesion and a secure bond.
- Please take care not to stretch the Insert when rolling.



Installation is now complete.