

Tandus

Tricot

MODULAR CARPET

Timeless
for all

Tricot offers a **wide range of 27 colors** enable to **find the right tone for every area of the workplace.** This **tightly detailed chenille** offers a **virtually seamless visual** when installed vertical ashlar. Combine Tricot with cement design LVT to create an industrial look.



△ OCEANO Plank 25x100cm: 631002006 Vertical Ashlar installation







△ BOBBIN Plank 25x100cm: 631002001



△ CAMEO Plank 25x100cm: 631002002



△ ALMOND Plank 25x100cm: 631002003



△ FAILLE Plank 25x100cm: 631002004



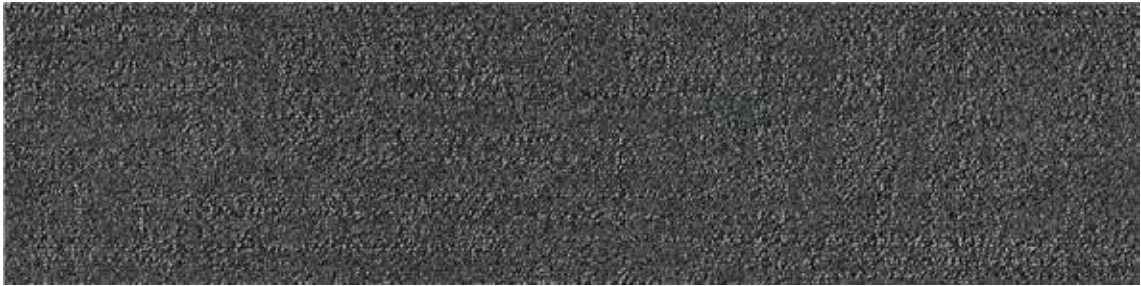
△ LEAVES Plank 25x100cm: 631002005



△ OCEANO Plank 25x100cm: 631002006



△ FELTING Plank 25x100cm: 631002007



△ SATURATED Plank 25x100cm: 631002008



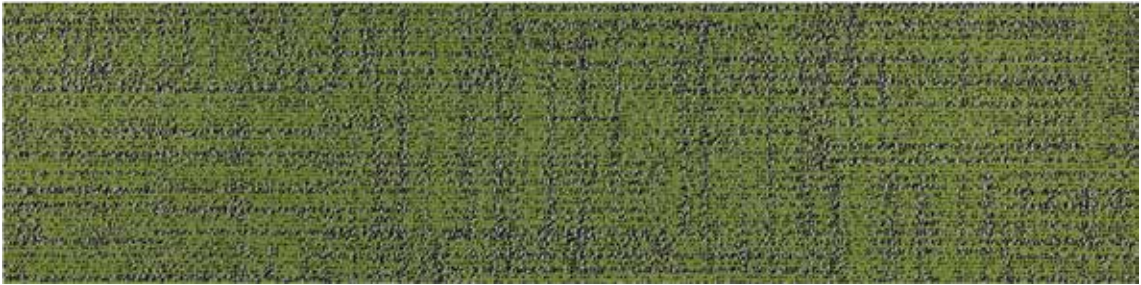
△ LOAM Plank 25x100cm: 631002009



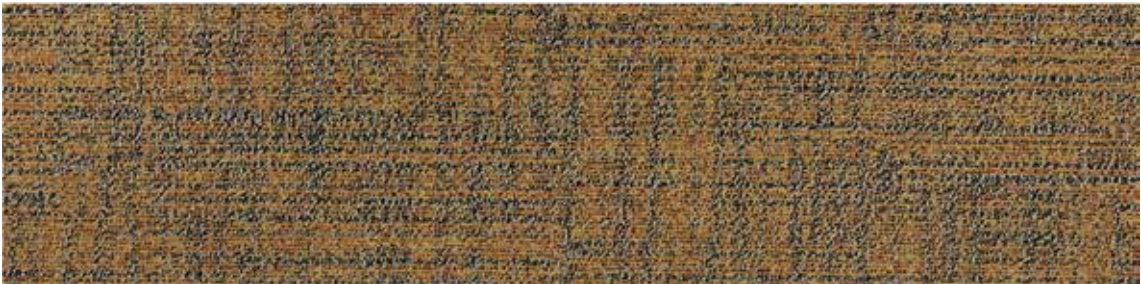
△ FIELDS Plank 25x100cm: 631002010



△ LINING Plank 25x100cm: 631002011



△ ASPARAGUS Plank 25x100cm: 631002012



△ GINKO Plank 25x100cm: 631002013



△ LUSTRINE Plank 25x100cm: 631002014



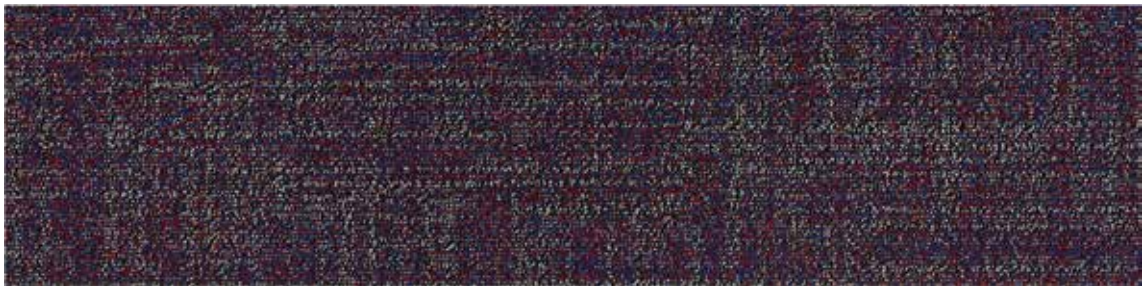
△ BOURNE Plank 25x100cm: 631002015



△ WILDERNESS Plank 25x100cm: 631002016



△ AZURE Plank 25x100cm: 631002017



△ CRANBERRY Plank 25x100cm: 631002018



△ POPPY Plank 25x100cm: 631002019



△ MIDNIGHT Plank 25x100cm: 631002020



△ KOSHIBO Plank 25x100cm: 631002021



△ ZIRCON RED Plank 25x100cm: 631002022



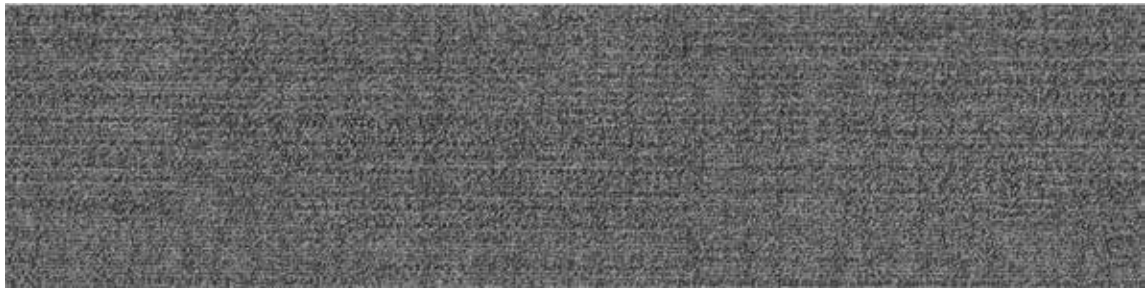
△ CITRON Plank 25x100cm: 631002023



△ MAIZE Plank 25x100cm: 631002024



△ PONKAN Plank 25x100cm: 631002025



△TUNDRA Plank 25x100cm: 631002026



△CHROMA Plank 25x100cm: 631002027



△FELTING Plank 25x100cm: 631002007 SATURATED Plank 25x100cm: 631002008 LOAM Plank 25x100cm: 631002009
Vertical Ashlar installation

Tricot

Product Specifications

Construction		Textured Loop
Fiber System		100% Nylon
Dye Method		Solution Dyed
Gauge		1/13"
Pile Height Average	ASTM D-418	3.8 mm
Stitches per inch	ASTM D-418	8.4
Total Product Weight		3,894 g/m ² ± 5%
Average Pile Density	UM44D	7,600 oz/yd ³
Indoor Air Quality		Comply with CRI Green Label Plus Standards ID: #GLP5288. Passes GB 18587-2001
Surface Flammability	ASTM D-2859	Passes CPSC FF 1-70
Flooring Radiant Panel	ASTM E-648	Class I (Mean average CRF: 0.45 watts/cm ² or higher)
Electrostatic Propensity	AATCC 134	3.0 kV or lower
Colourfastness to Light	AATCC 16E	≥ 4 after 100 hours
Standard Backing		Tandus ECOPLY™ PVC Backing
Backing Customization Option		Tandus ECOBOND™ PVC Backing
Recycled Content		Tandus ECOBOND™ contains a minimum of 35% overall recycled content
Recycling		100% recyclable when recovered
Standard Product Size		250 mm x 1000 mm 500 mm x 500 mm 667 mm x 667 mm

Product Notes

1. Product specifications are derived from averages resulting from normal manufacturing tolerances in yarn, fiber, temperature, humidity and colour. Product specifications may vary within normal industry and standardised testing tolerances.
2. These specifications reflect mean averages based upon tests of production runs of this carpet style by independent laboratories. A range of variances is implicit in the testing process. Furthermore, the standard test methods established to derive the specifications lack a degree of precision and repeatability; therefore, individual test results on the actual carpet purchased may differ from the specifications above.
3. Colours may vary slightly from dye lot to dye lot.
4. Backing or other materials may be changed without prior notice when shortages occur or when technological advancements become available which provide for improvement of the product's performance.
5. All products are 100% recyclable.

Warranty

Limited 15 years non-prorated surface wear, static, delamination, edge ravel, zippering and backing resiliency loss.

See warranty for details. Contact your Tarkett Representative for detailed specifications, limited warranty and sample requests.

Email: saleshk@tarkett.com

Installation Instructions

