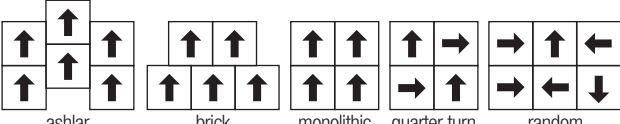


carpet tile | DISPERSE Movement

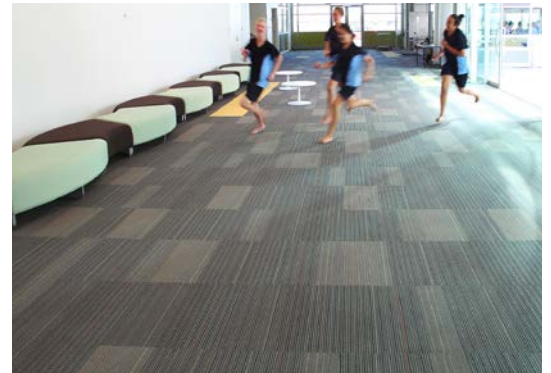
| | | |
|----------------------|---|----------------------------------|
| Size | 610 x 610 mm | |
| Fire | 7.7 kW/m ² | Critical Radiant Flux ISO 9239.1 |
| Backing | Ecoworx | |
| Fibre | 100% Solution Dyed Nylon | |
| Warranty | Lifetime commercial limited | |
| Box Quantity | 12 tiles: 4.46m ² | |
| Adhesive | Lok-dots or Sure-Tac | |
| Installation Options |  | |



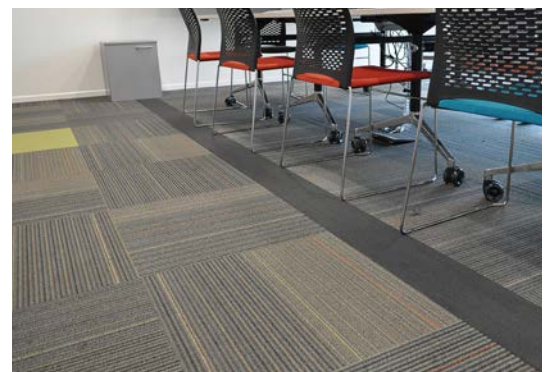
For more installed images, view the projects on our website: www.jacobsens.co.nz



Education | Silverstream Kindergarten



Education | Papamoa College



Office | Transpower

May 2016