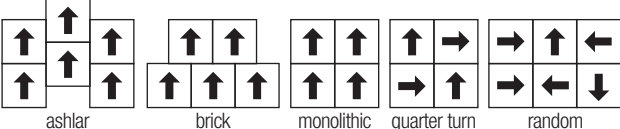
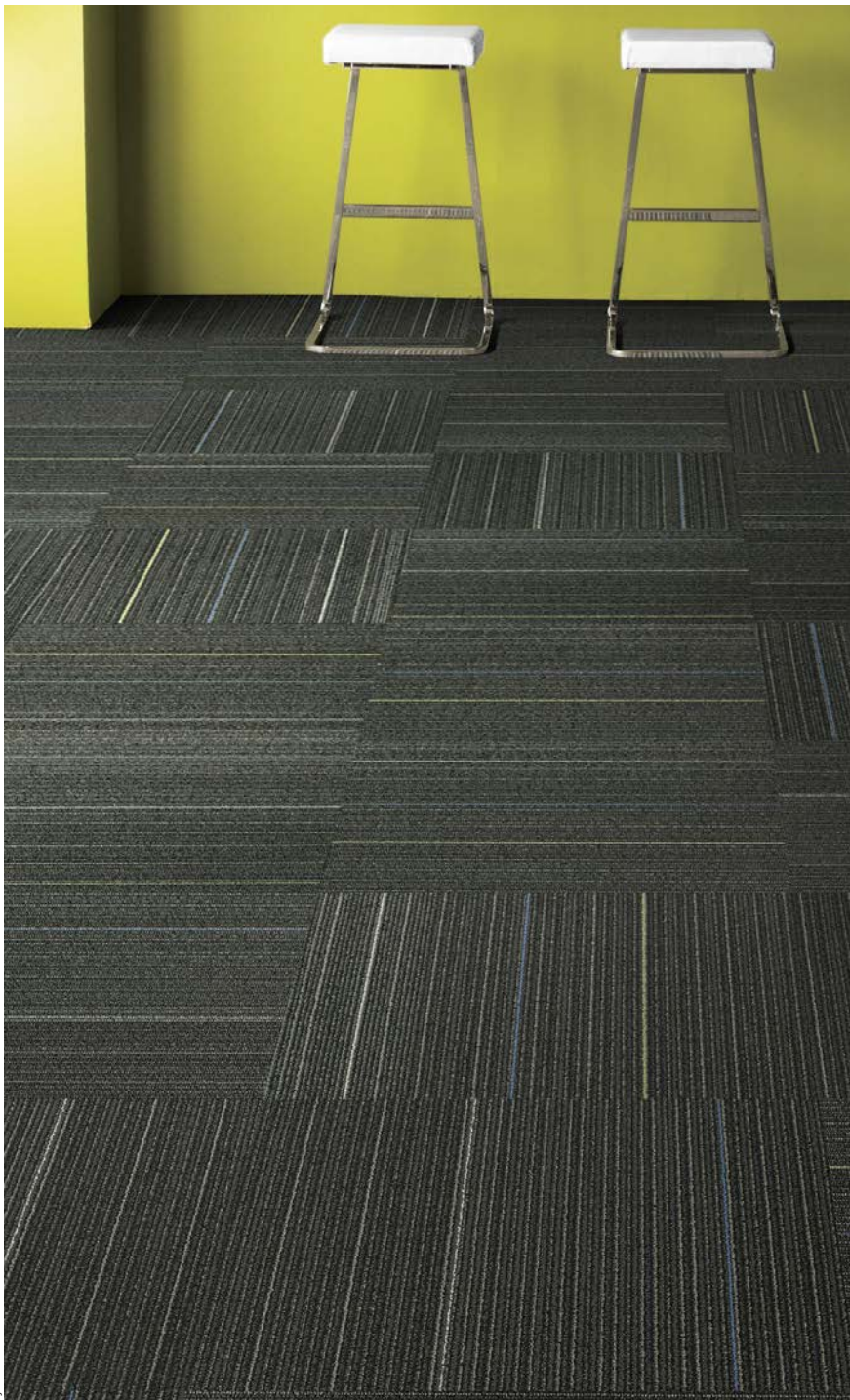


carpet tile | DISPERSE Magnetic Fields

Size	610 x 610 mm	
Fire	7.7 kW/m ²	Critical Radiant Flux ISO 9239.1
Backing	Ecoworx	
Fibre	100% Solution Dyed Nylon	
Warranty	Lifetime commercial limited	
Box Quantity	12 tiles: 4.46m ²	
Adhesive	Lok-dots or Sure-Tac	
Installation Options	 ashlar brick monolithic quarter turn random	



For more installed images, view the projects on our website: www.jacobsens.co.nz



Education | Endeavour School



Education | Hingaia Peninsula School

May 2016



for more information visit
www.jacobsens.co.nz