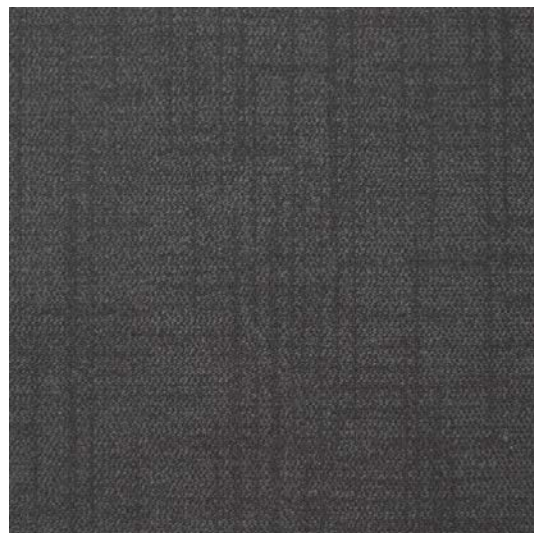


# carpet tile | PIHA Loam

Size	610 x 610 mm												
Fire	7.7 kW/m <sup>2</sup> Critical Radiant Flux ISO 9239.1												
Backing	Ecoworx												
Fibre	100% Solution Dyed Nylon												
Warranty	Lifetime commercial limited												
Box Quantity	12 tiles: 4.46m <sup>2</sup>												
Adhesive	Lok-dots or Sure-Tac												
Installation Options	<table border="1"><tr><td>↑</td><td>↑</td><td>↑</td><td>→</td></tr><tr><td>↑</td><td>↑</td><td>→</td><td>↑</td></tr><tr><td colspan="2">monolithic</td><td colspan="2">quarter turn</td></tr></table>	↑	↑	↑	→	↑	↑	→	↑	monolithic		quarter turn	
↑	↑	↑	→										
↑	↑	→	↑										
monolithic		quarter turn											



June 2016