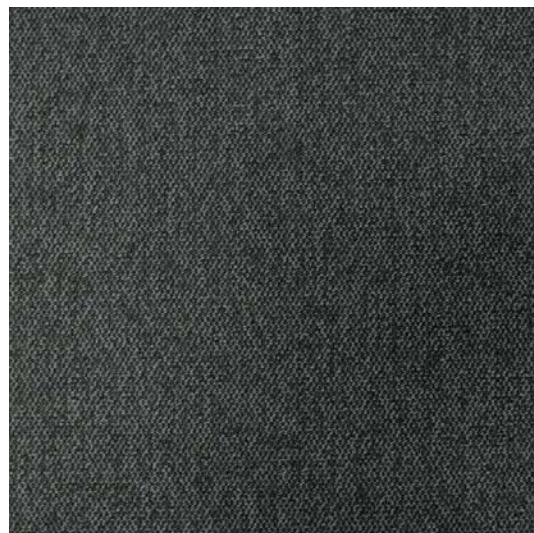


carpet tile | WAIMEA Granite

Size	610 x 610 mm													
Fire	7.7 kW/m ²	Critical Radiant Flux ISO 9239.1												
Backing	Ecoworx													
Fibre	100% Solution Dyed Nylon													
Warranty	Lifetime commercial limited													
Box Quantity	12 tiles: 4.46m ²													
Adhesive	Lok-dots or Sure-Tac													
Installation Options	<table border="1"><tr><td>↑</td><td>↑</td><td>↑</td><td>→</td></tr><tr><td>↑</td><td>↑</td><td>→</td><td>↑</td></tr><tr><td colspan="2">monolithic</td><td colspan="2">quarter turn</td></tr></table>		↑	↑	↑	→	↑	↑	→	↑	monolithic		quarter turn	
↑	↑	↑	→											
↑	↑	→	↑											
monolithic		quarter turn												



June 2016