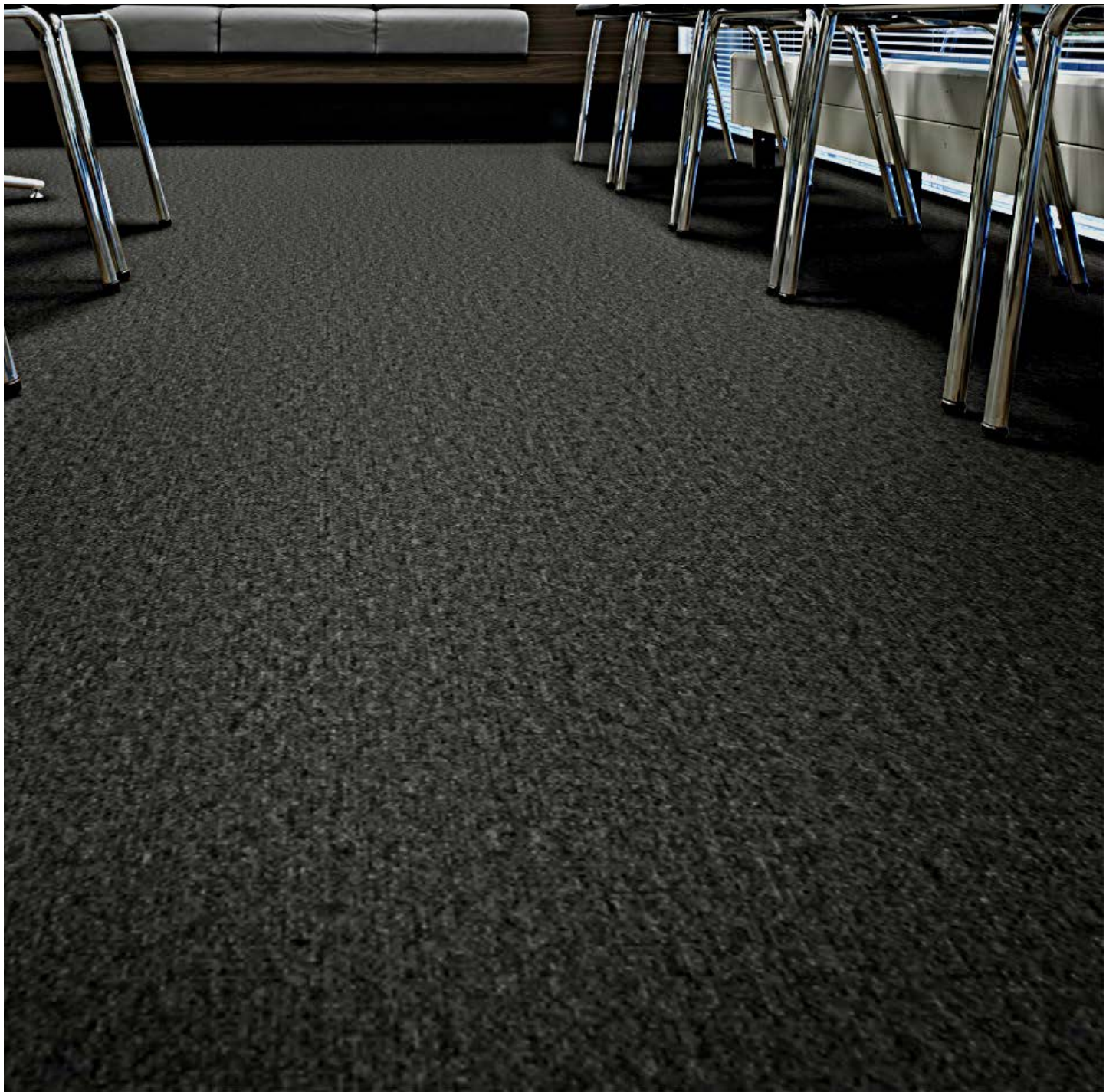


# carpet tile | ESSENCE 9501

Size	500 x 500 mm						
Fire	8.8 kW/m <sup>2</sup> Critical Radiant Flux ISO 9239.1						
Backing	Probase						
Fibre	100% Solution Dyed Nylon						
Box Quantity	20 tiles:5m <sup>2</sup>						
Adhesive	Giltgrip 66 Pressure Sensitive Adhesive						
Installation Options	<table border="1"><tr><td>↑ ↑</td><td>↑ →</td></tr><tr><td>↑ ↑</td><td>→ ↑</td></tr><tr><td>monolithic</td><td>quarter turn</td></tr></table>	↑ ↑	↑ →	↑ ↑	→ ↑	monolithic	quarter turn
↑ ↑	↑ →						
↑ ↑	→ ↑						
monolithic	quarter turn						



July 2016



for more information visit [www.jacobsens.co.nz](http://www.jacobsens.co.nz)