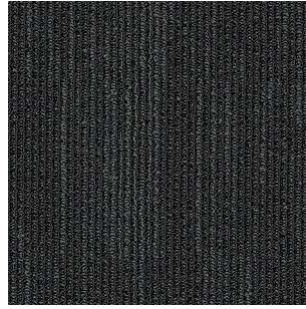




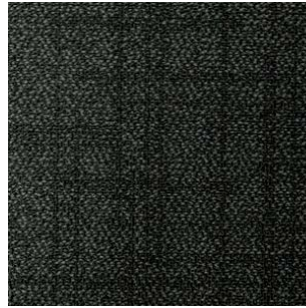
Karamea Lava



Karamea Lava



Muriwai Lava



Piha Reef



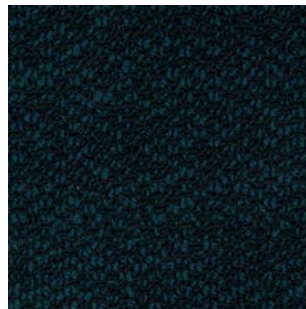
Piha Silica



Taharuu Bedrock



Taharuu Clay



Waimea Bluestone



Waimea Coal



Waimea Granite



Waimea Volcanic



Taharuu Clay

Specifications

| | |
|------------------------------------|---|
| Construction | Pattern loop |
| Fibre | Eco Solution Q [®] Nylon |
| Dye Method | 100% Solution Dyed |
| Pattern Repeat | None |
| Tufted Weight | 16oz/yd ² |
| Gauge | 1/12" |
| Finished Pile Thickness | 3.9mm |
| Total Thickness | 5.3mm |
| Product Size | 24" x 24" 60.96cm x 60.96cm |
| Primary Backing | Synthetic |
| Secondary Backing | Ecoworx [®] tile |
| Protective Treatments | SSP [®] Shaw Soil Protection |
| ISO 9239.1:2003 Fire Test | Mean Critical Radiant Flux 7.7kW/m ² |
| Electrostatic Propensity | Less than 3.5 kv |
| Warranty | Lifetime Commercial Limited |
| Environmental | Good Environmental Choice Australia Cradle to Cradle Silver Certified Declare Label - LBC Compliant |
| Recyclability | 100% recyclable |
| Materials | Does not contain PVC, Phthalates, or PBD/PBDE |
| Recycled Content: | |
| - Total Recycled Content by Weight | 44.4% |
| - Pre-consumer | 33.3% |
| - Post-consumer | 11.1% |



Muriwai Lava



Piha Silica



Expertise from the floor up

for more information visit
www.jacobsens.co.nz